



The innovative public regulator

Three inherent characteristics that slow down innovation

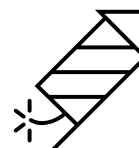
Let me introduce myself...



Netherlands Food and Consumer
Product Safety Authority
*Ministry of Agriculture,
Nature and Food Quality*



ERASMUS UNIVERSITY ROTTERDAM

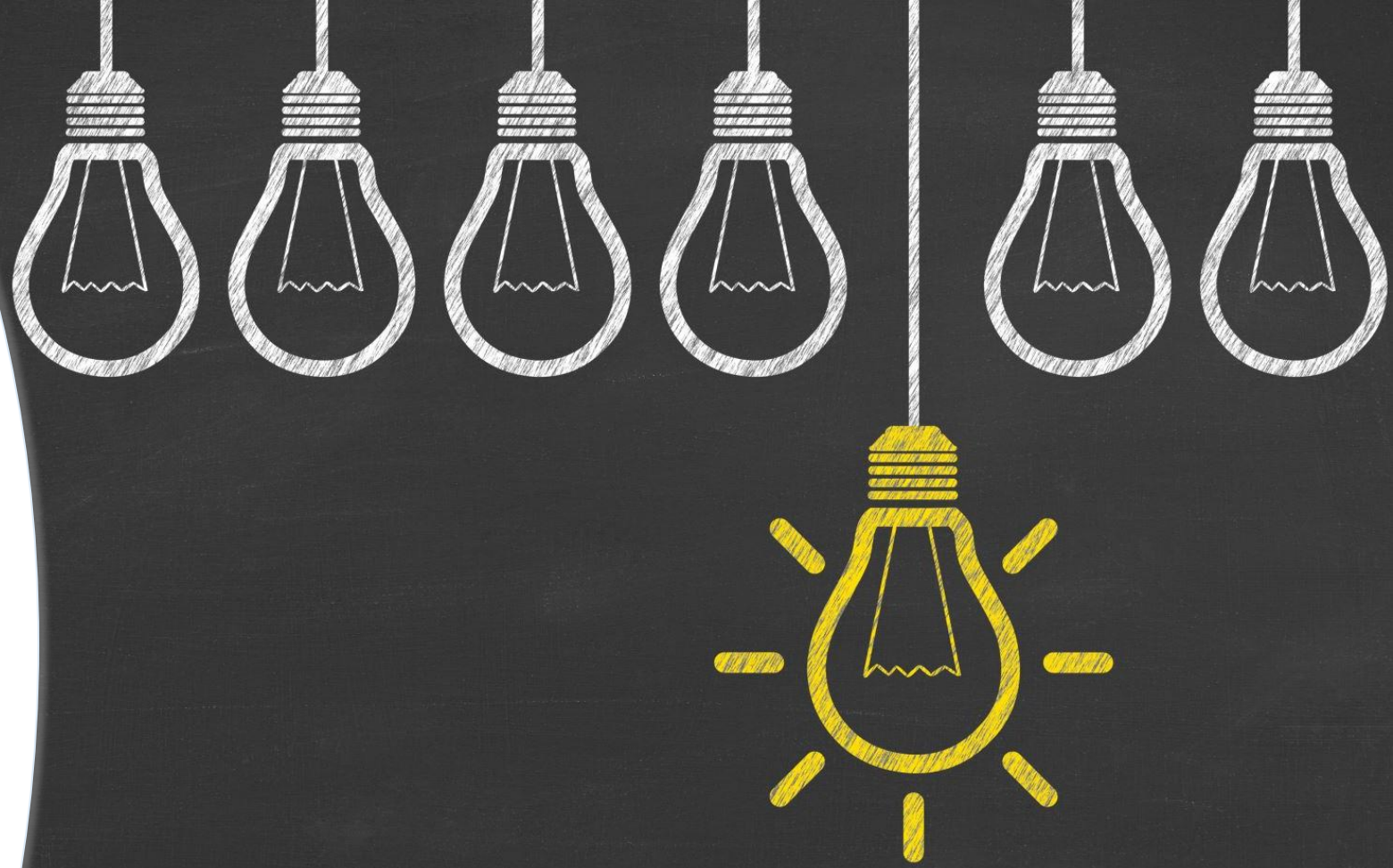


Improve, modernize and innovate supervisory practices



My study

The Innovation Tragedy of Public Regulators: Three
Inherent Characteristics That Slow Innovation



Innovative supervision – a few examples

- Internet supervision
- Supervision aimed at encouraging compliance
- Voluntary agreements
- Regulatory sandboxes
- Supervision using drones
- Supervision using mystery shoppers
- Providing incentives
- Camera surveillance



The innovative public regulator

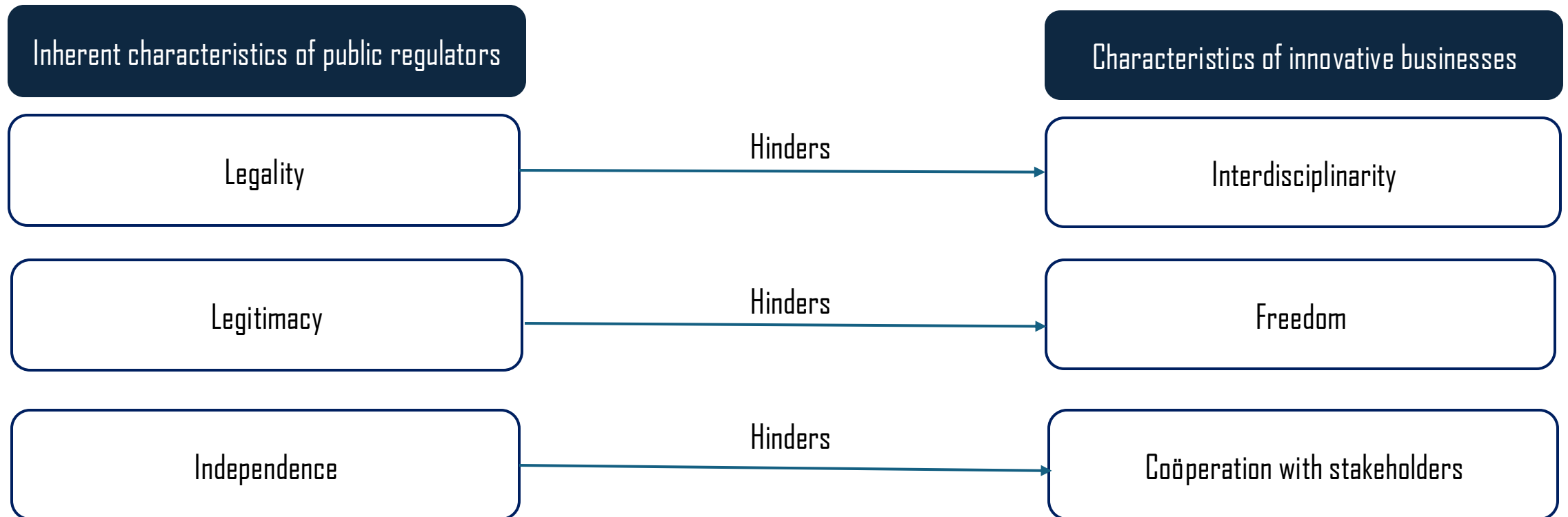
Innovation in supervision is crucial for public regulators. It enables them to improve their supervisory methods and create social added value.

However, innovation is a challenging task.



Innovation obstacles

This study shows how the characteristics that define public regulators and influence their actions hinder supervisory innovation.



Inherent characteristic of public regulators	Characteristics of innovative businesses	The implications for supervision	Innovation obstacles
<i>Legality</i>	Simultaneous coupling	Linear primary work processes	Sequential coupling of knowledge
	Requisite variety	Legal approach to issues	Insufficient variety in disciplines
	Minimum critical specification	Clearly defined supervisory methods	Little freedom to act outside existing working methods
<i>Legitimacy</i>	Organizational autonomy	Bound by the public mandate	Missing opportunities that lay outside the assignment
	Long term mission	Incidents drive priorities	Short-term commitment and focus of people and resources
	Creative destruction	Answerable to third parties	Reluctance to experiment with supervisory methods and to embed them
<i>Independence</i>	Institutional entrepreneurship	Susceptible to political influence	Reluctance to involve political actors
	Open innovation with suppliers	Sensitive to regulatory capture	Reluctance to involve regulatees
	Innovation with (lead) users	Underestimation of citizens	Reluctance to involve citizens

Innovation obstacles

Inherent characteristic of public regulators	Characteristics of innovative businesses	The implications for supervision	Innovation obstacles
<i>Legality</i>	Simultaneous coupling	Linear primary work processes	Sequential coupling of knowledge
	Requisite variety	Legal approach to issues	Insufficient variety in disciplines
	Minimum critical specification	Clearly defined supervisory methods	Limited opportunity to act outside existing practices

Thank you!



l.jansen@rsm.nl