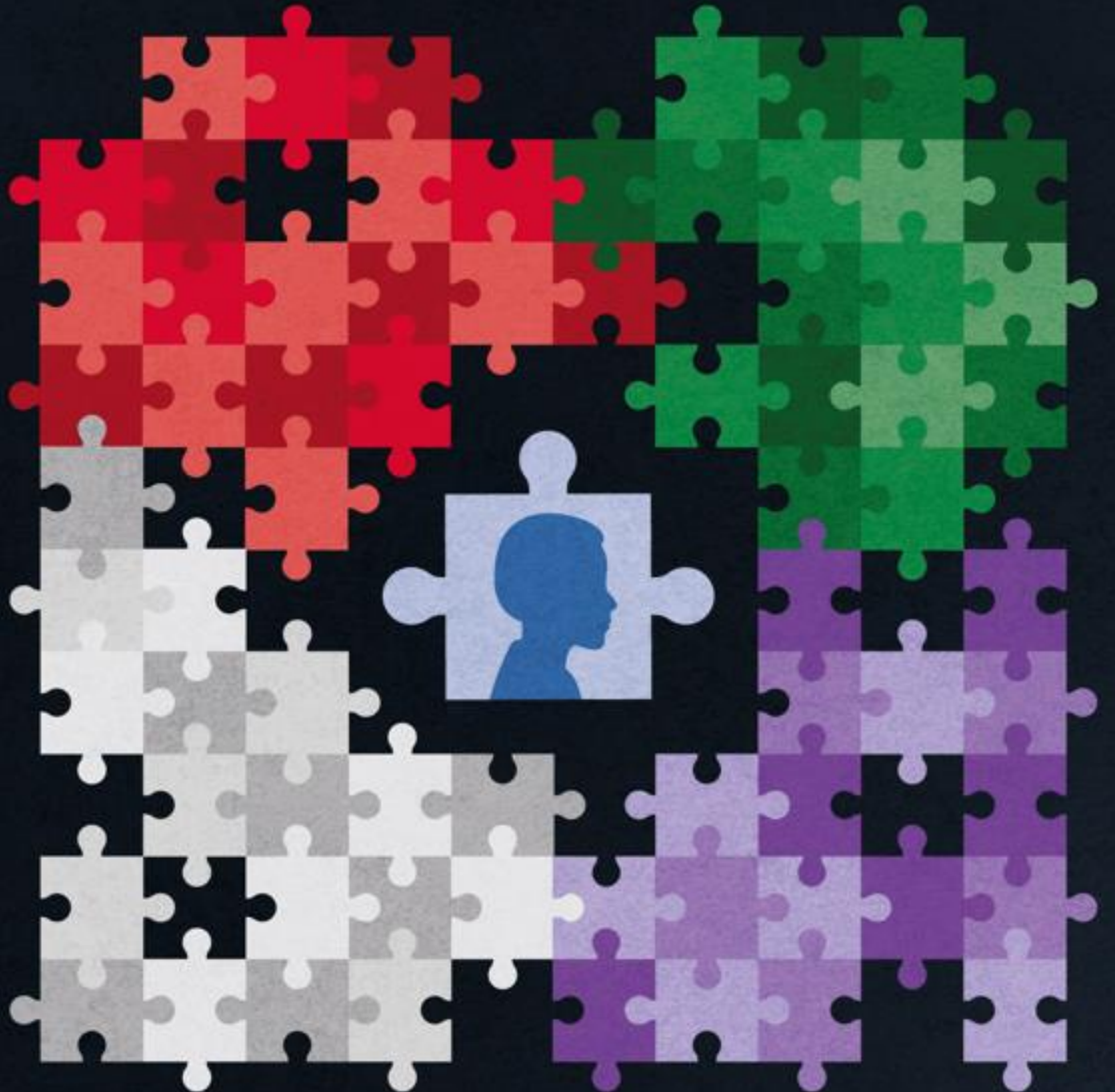
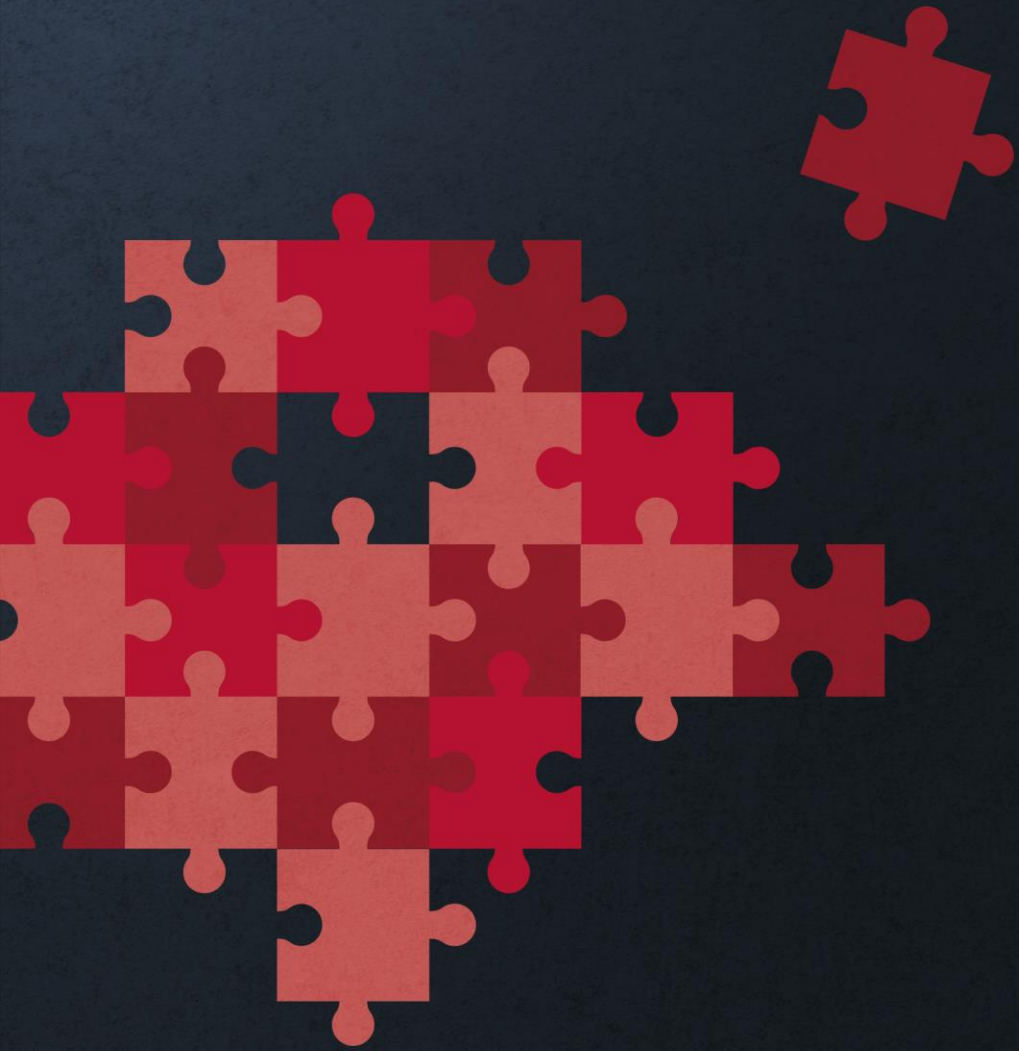


# Integrated person-centred care for vulnerable groups through a realist lens

Anam Ahmed | Panaxea

EPSO-NET  
April 3<sup>rd</sup>, 2024





# INTRODUCTION

# Introduction

## Integrated person-centred care



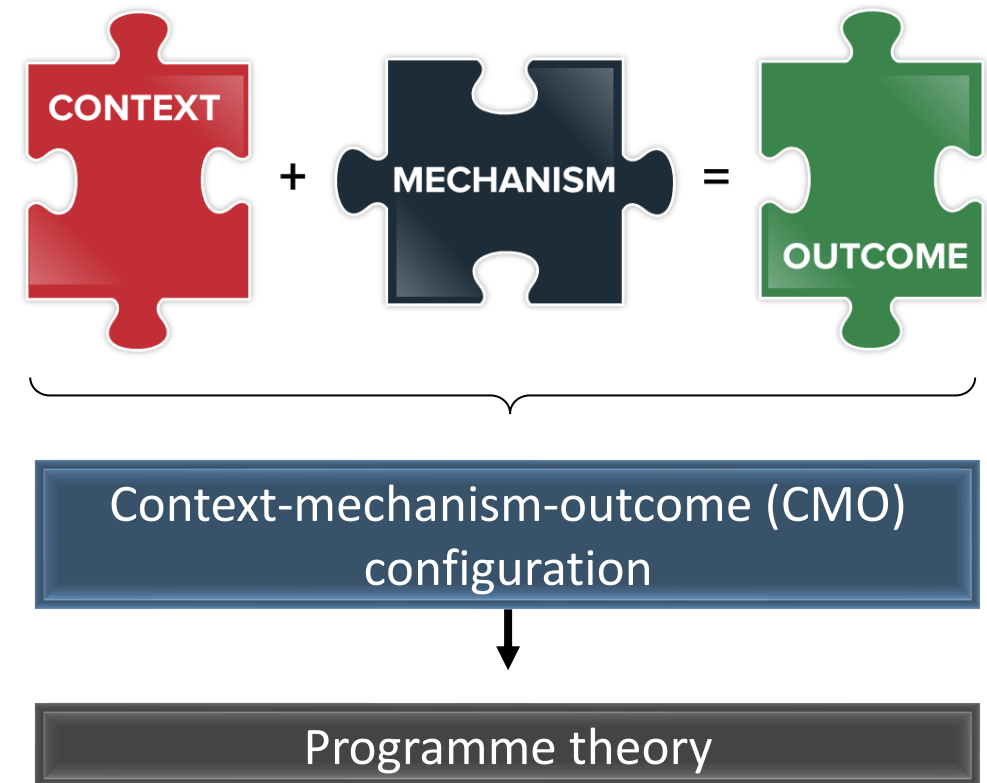
### Current issues

- Integrated person-centred care (I-PCC): poorly understood and implemented in practice.
- Existing literature: heterogeneity in outcomes.
- Traditional research only indicates whether I-PCC is more effective or not.

# Introduction

## Realist research

- Theory-driven approach
- Explanatory focus
  - Focus on how and why complex programmes thrive or fail, in setting(s)
- Important constructs:

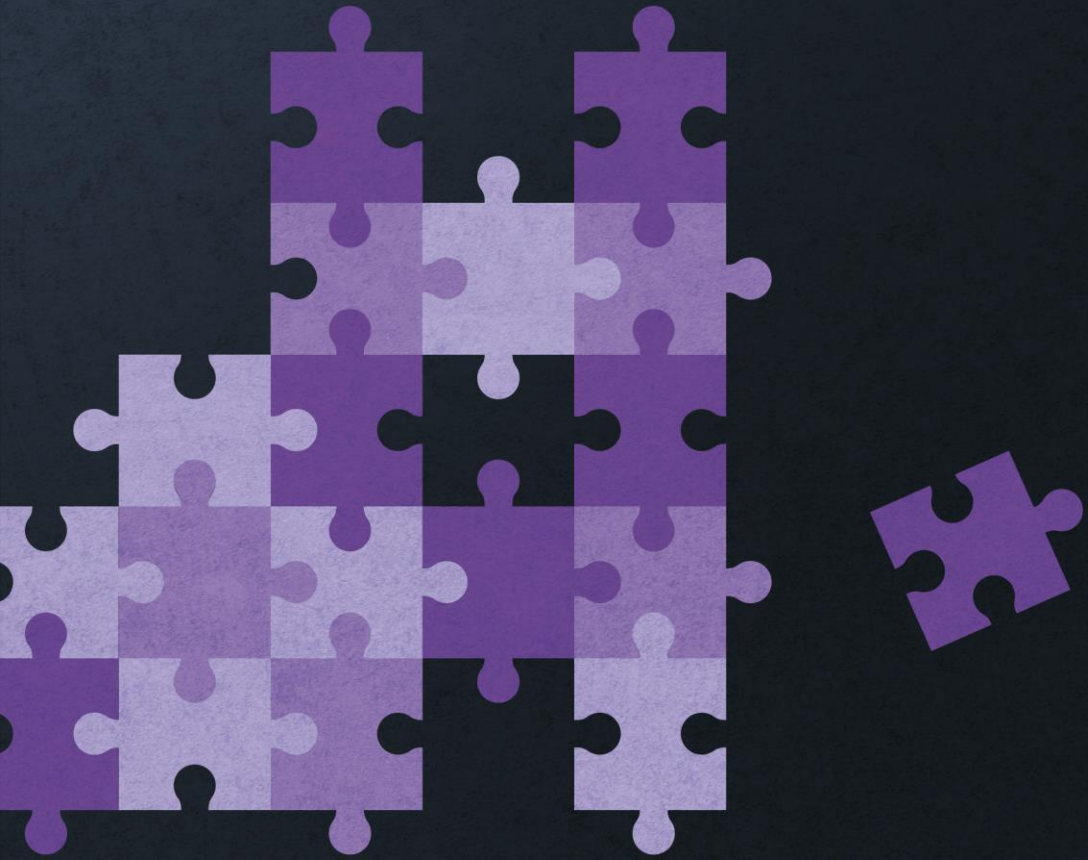


## Introduction

### Study objective



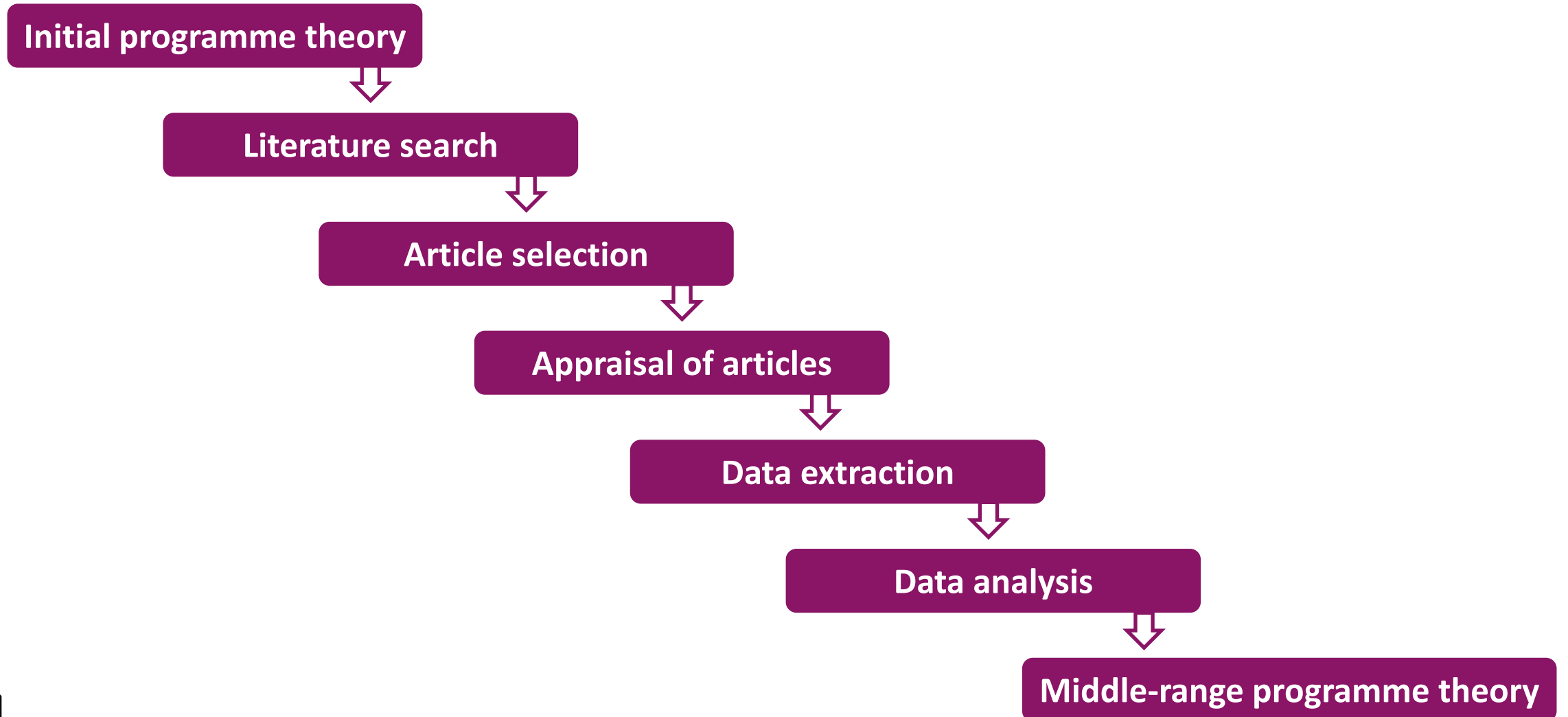
To explain how, why, and in what circumstances I-PCC works (or not) by establishing a programme theory

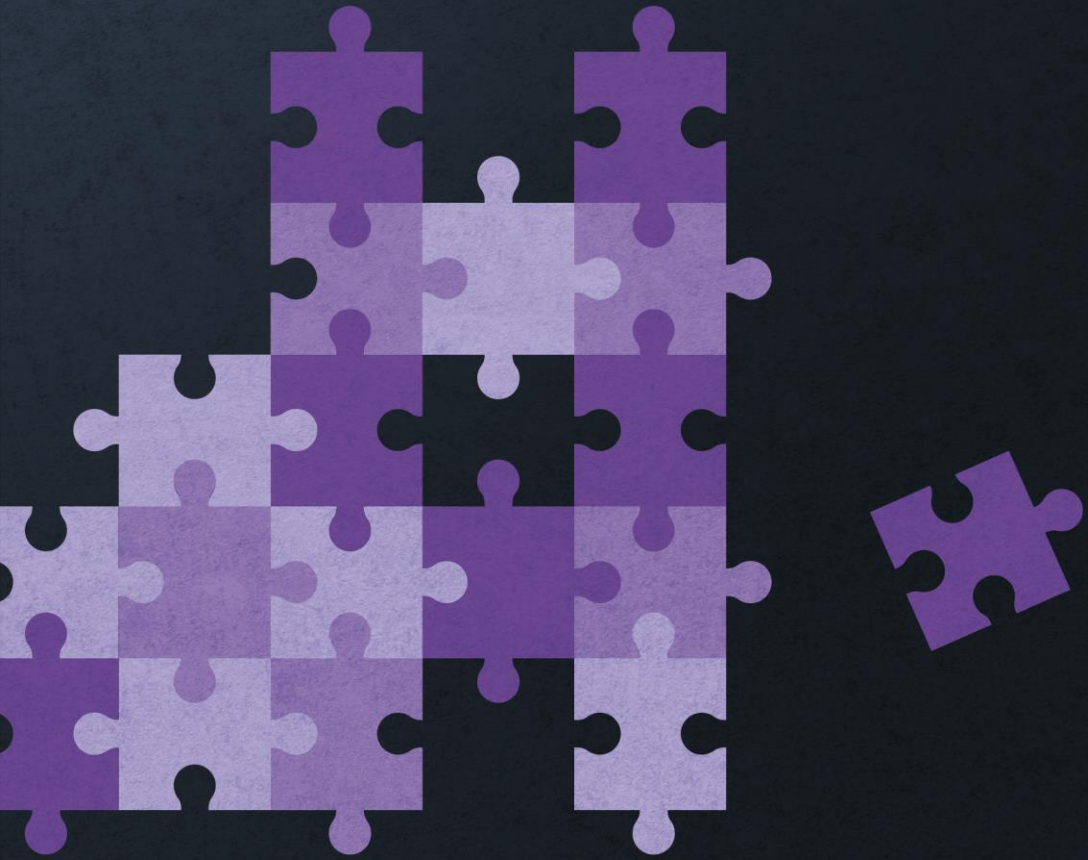


**METHODS 1**  
**RAPID REALIST REVIEW**

## Methods

### Rapid realist review





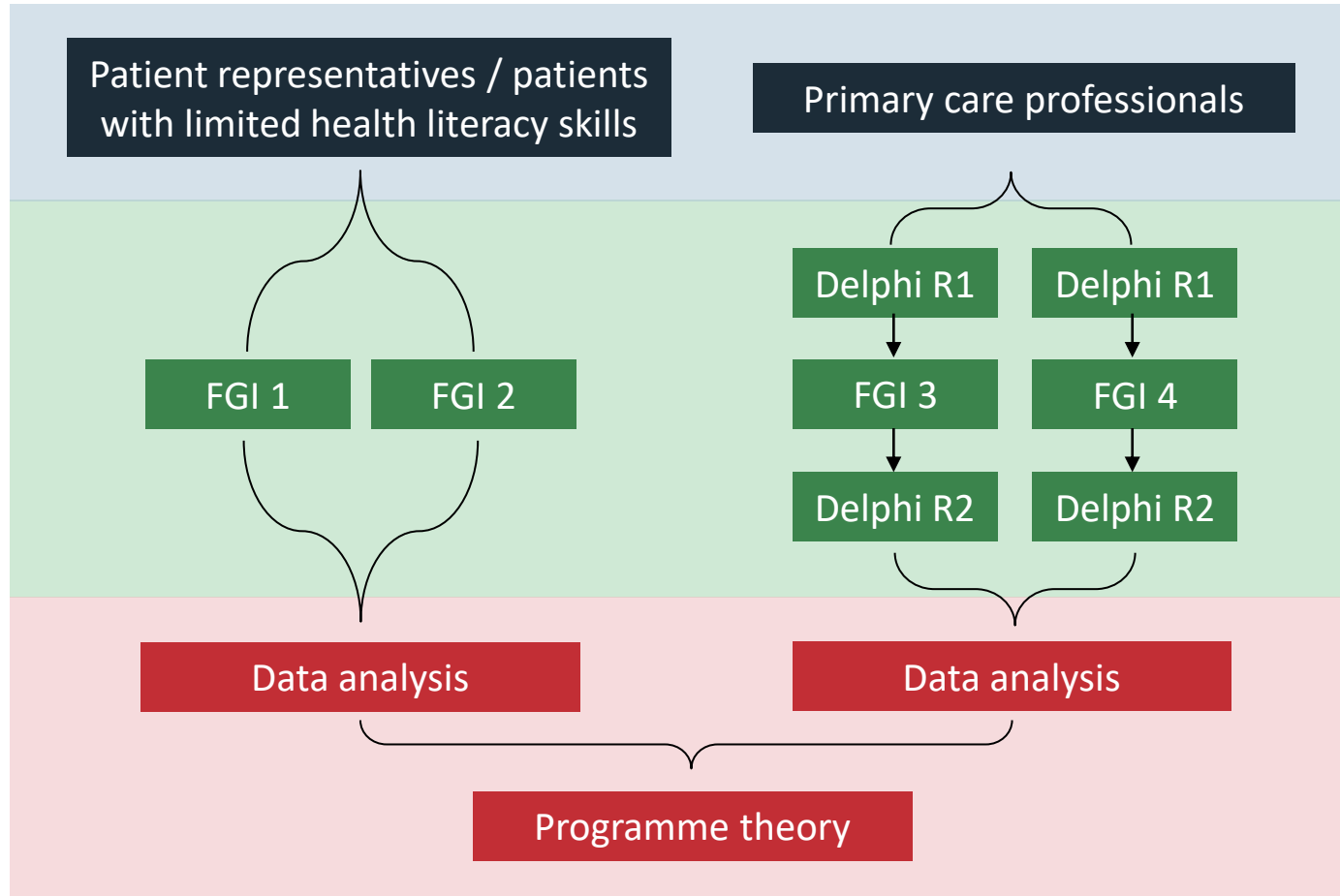
## **METHODS 2**

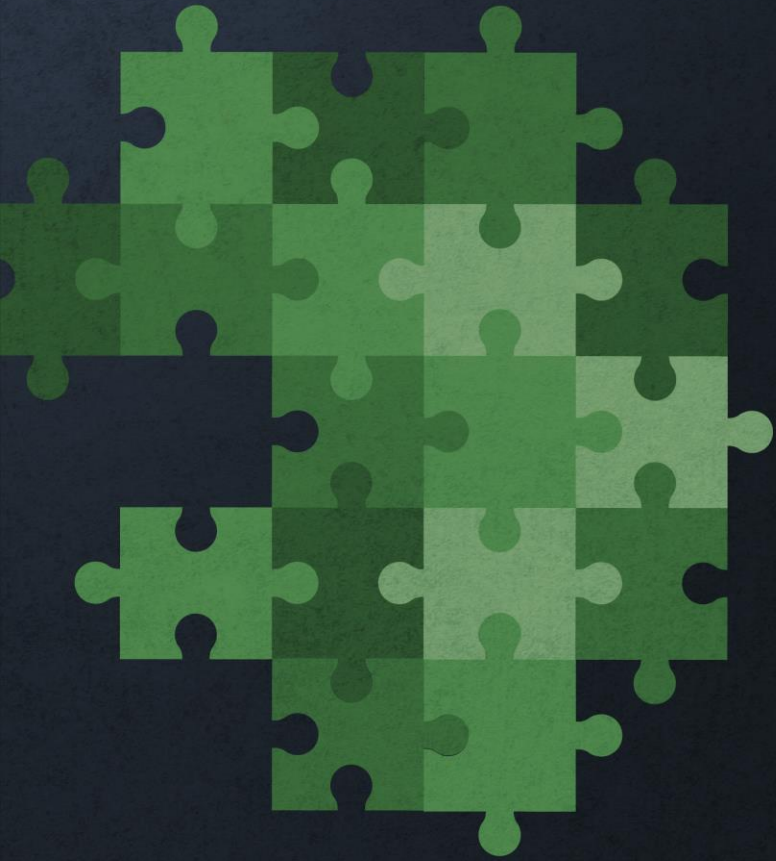
# **FOCUS GROUP DISCUSSIONS**



# Methods

## Focus group discussions

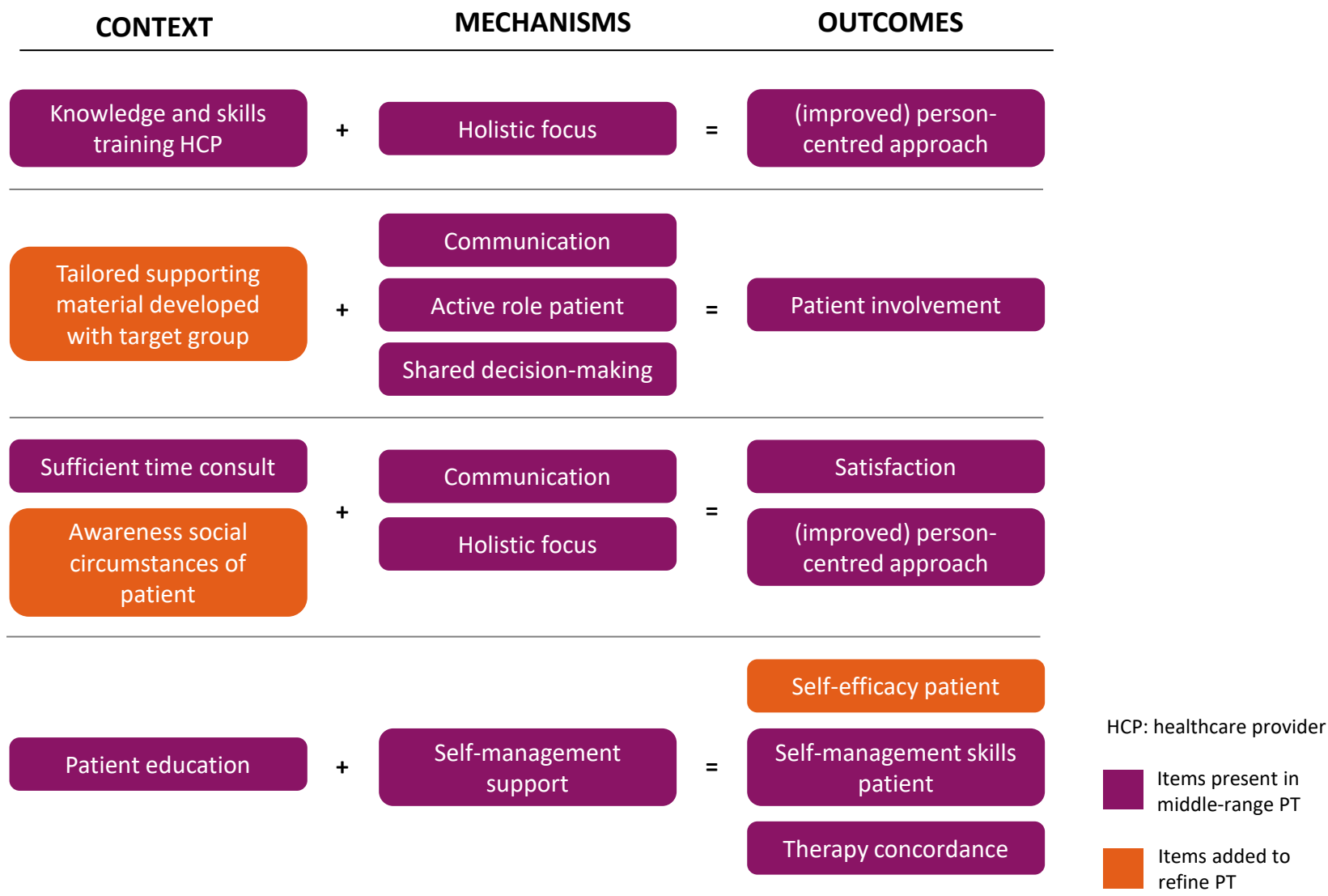




**RESULTS**

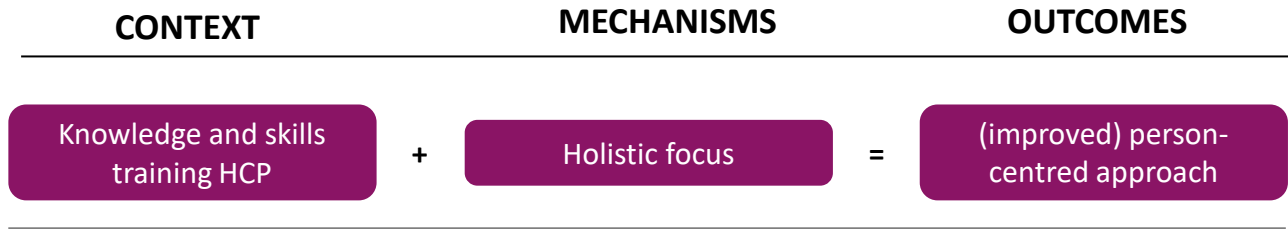
# Methods

## Refined programme theory



# Methods

## Refined programme theory



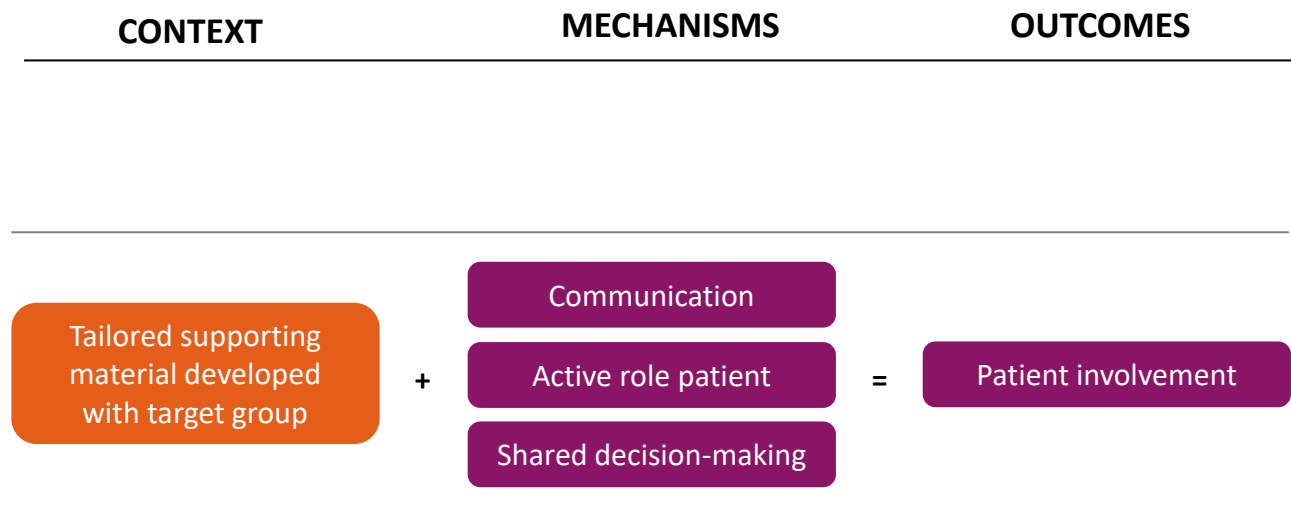
HCP: healthcare provider

■ Items present in middle-range PT

■ Items added to refine PT

# Methods

## Refined programme theory



HCP: healthcare provider

■ Items present in middle-range PT

■ Items added to refine PT

# Methods

## Refined programme theory

CONTEXT

MECHANISMS

OUTCOMES



HCP: healthcare provider

■ Items present in middle-range PT

■ Items added to refine PT

# Methods

## Refined programme theory

CONTEXT

MECHANISMS

OUTCOMES

Patient education

+

Self-management support

=

Self-efficacy patient

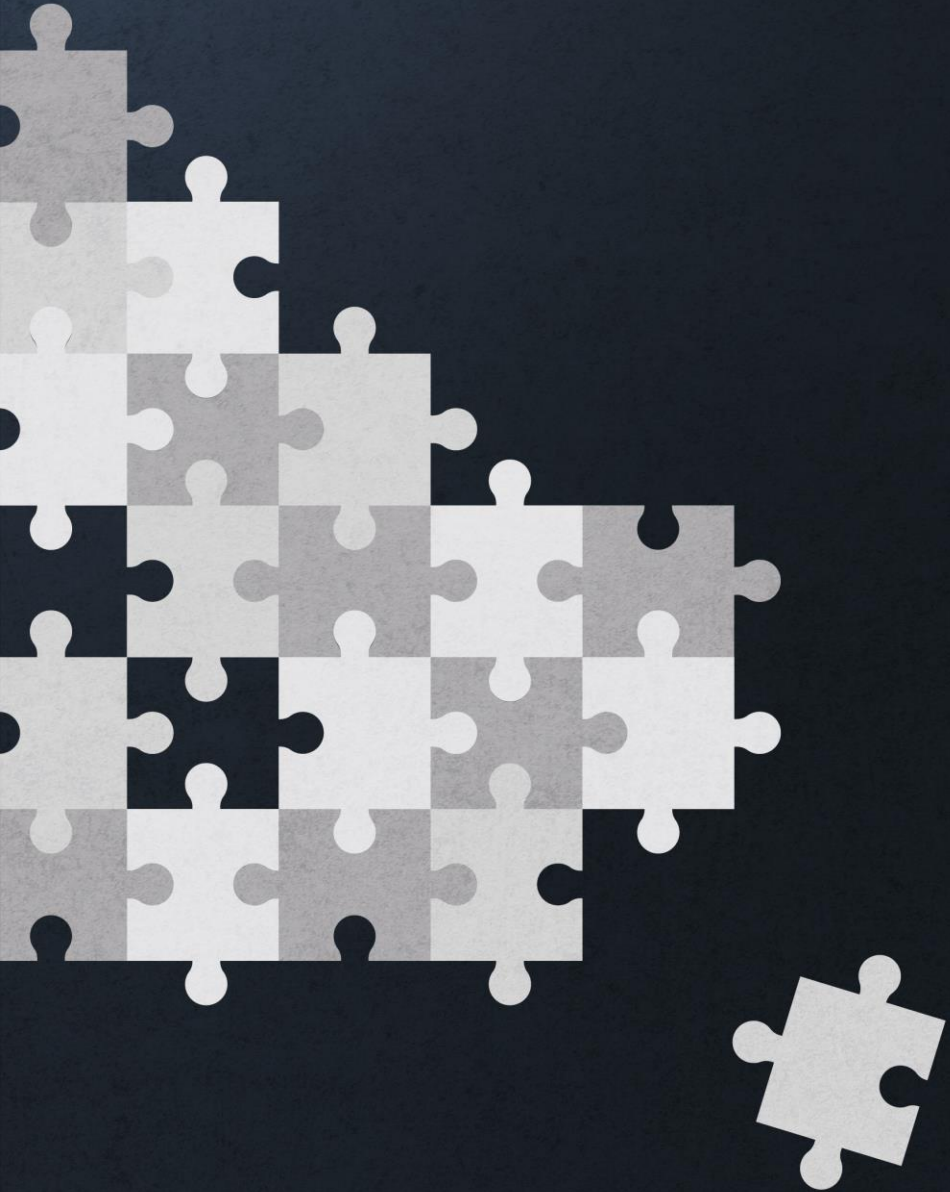
Self-management skills patient

Therapy concordance

HCP: healthcare provider

■ Items present in middle-range PT

■ Items added to refine PT



## **CONCLUSION AND DISCUSSION**



# Conclusion and Discussion

## Conclusion

- Coherence of items need to be considered to understand effectiveness of PCC in primary care.
- Complex interplay of items relevant to a setting must be met.

## Discussion

- Assigning items to constructs (C, M, or O).
- Included studies had incomplete data to construct CMO-configurations.



[anam.ahmed@panaxea.eu](mailto:anam.ahmed@panaxea.eu)



[linked.com/company/panaxea](https://www.linkedin.com/company/panaxea)



[twitter.com/PANAXEA](https://twitter.com/PANAXEA)

